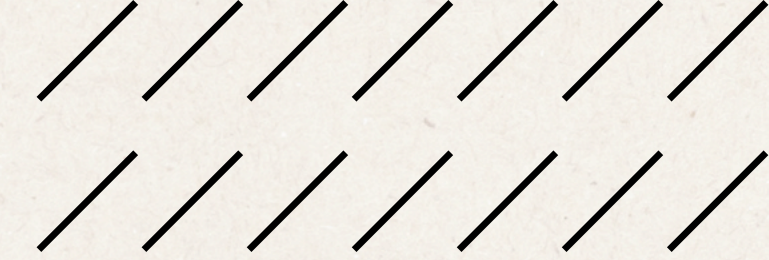


2026

# **INDUSTRIAL DRONE SERVICES**



# SERVICES



|    |                            |
|----|----------------------------|
| 01 | MAGNETOMETER               |
| 02 | RGB MAPPING                |
| 03 | PHOTOGRAMMETRY             |
| 04 | LiDAR                      |
| 05 | METHANE/GAS DETECTION      |
| 06 | THERMAL IMAGING            |
| 07 | CONFINED SPACE EXPLORATION |

# MAGNETOMETER

**GEOPHYSICAL METHOD THAT MEASURES SUBTLE VARIATIONS IN EARTH'S MAGNETIC FIELD.**

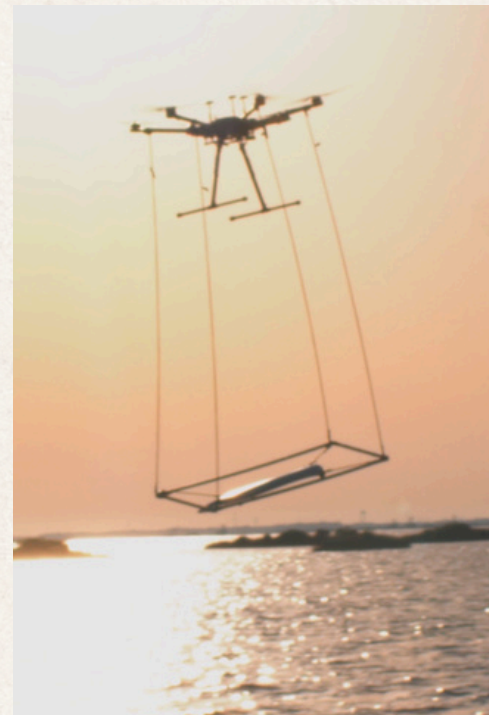
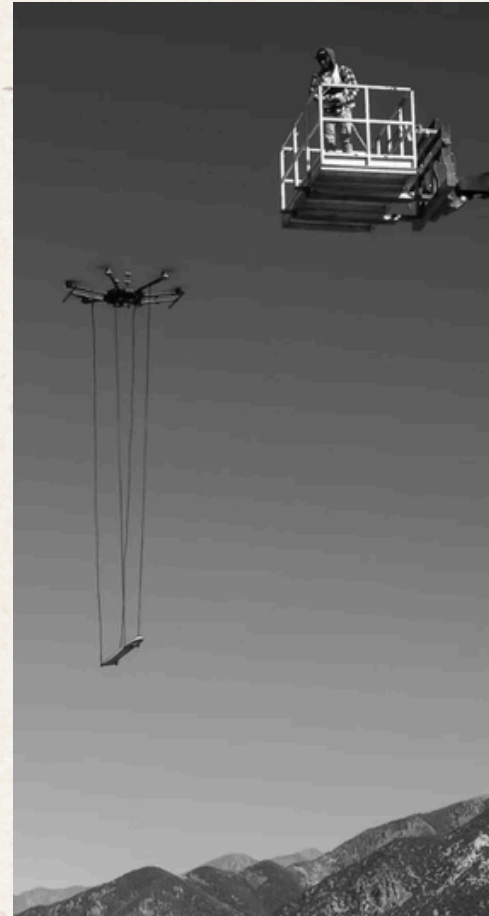
**WE MOUNT HIGHLY SENSITIVE MAGNETOMETER SENSOR BENEATH THE UAV. ALLOWS THE CAPTURE OF HIGH-RESOLUTION MAGNETIC DATA IN A QUICK AND SAFE MANNER WITH MINIMAL DISTURBANCES TO THE SITE.**

**BUILD A STRUCTURAL FRAMEWORK BEFORE COMMITTING TO DRILLING**

**REDUCE RISK BEFORE DRILLING**

**DETECTION OF:**

- IDENTIFICATION OF ABANDONED OIL WELLHEADS
- DETECTION OF BURING PIPELINES
- LOCATE CASING REMNANTS
- FLAG FERROUS DEBRIS BEFORE PAD CONSTRUCTION



|                 | SPECS   |
|-----------------|---|
| DRONE           | FREEFLY ALTAX<br>ARCSKY X55                       |
| FLIGHT TIME     | 20+ MINS.   |
| SENSOR          | GEOMETRICS MAGARROW V2                            |
| SURVEYING RATE  | 100-300 ACRES/DAY<br>*TERRAIN DEPENDENT           |
| DATA TURNAROUND | 1 WEEK - DATA PROCESSING<br>4 WEEKS - FULL REPORT |
| SETUP TIME      | 60 MINS.  |
| CREW            | 2-3 PERSON CREW ON-SITE                           |

# RGB MAPPING

02/07

USING HIGH-RESOLUTION VISUAL IMAGERY TO CREATE ACCURATE, MEASURABLE MAPS AND 3D MODELS OF YOUR SITE.

- **RGB MAPPING: VISUAL BASELINE**
- **PHOTOGRAMMETRY: ANALYZES RGB IMAGES AND PRODUCES MEASURABLE DATA**
- **LIDAR: ELEVATION & PRECISION MODELING**



|                 | SPECS   |
|-----------------|---|
| DRONE           | DJI MAVIC 3 ENTERPRISE                            |
| FLIGHT TIME     | 30+ MINS.   |
| SENSOR          | ONBOARD CAMERA                                    |
| SURVEYING RATE  | 100-300 ACRES/DAY<br>*TERRAIN DEPENDENT           |
| DATA TURNAROUND | 1 WEEK - DATA PROCESSING<br>4 WEEKS - FULL REPORT |
| SETUP TIME      | 30 MINS.  |
| CREW            | 2 PERSON CREW ON-SITE                             |

# PHOTOGRAMMETRY

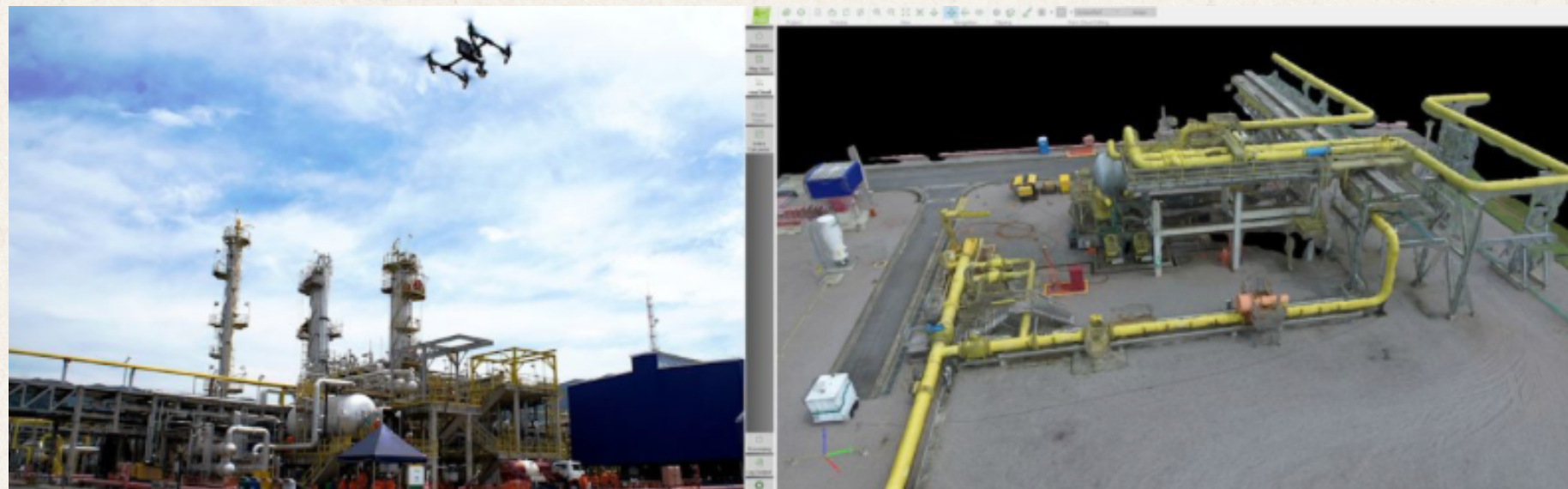
03/07

**CAPTURING HIGH RESOLUTION IMAGERY THEN STITCHED TOGETHER TO CREATE 3D MODELS, ORTHOMOSAICS AND MEASURABLE MAPS**

**DETAILED, MEASURABLE VISUAL MODEL OF YOUR SITE**

**COMPARED TO LIDAR:**

- **PHOTOGRAMMETRY GIVES YOU A VISUAL TWIN**
- **LIDAR GIVES YOU STRUCTURAL PRECISION**



|                 | SPECS   |
|-----------------|---|
| DRONE           | DJI MAVIC 3 ENTERPRISE                            |
| FLIGHT TIME     | 30+ MINS.   |
| SENSOR          | ONBOARD CAMERA                                    |
| SURVEYING RATE  | 100-300 ACRES/DAY<br>*TERRAIN DEPENDENT           |
| DATA TURNAROUND | 1 WEEK - DATA PROCESSING<br>4 WEEKS - FULL REPORT |
| SETUP TIME      | 30 MINS.  |
| CREW            | 2 PERSON CREW ON-SITE                             |

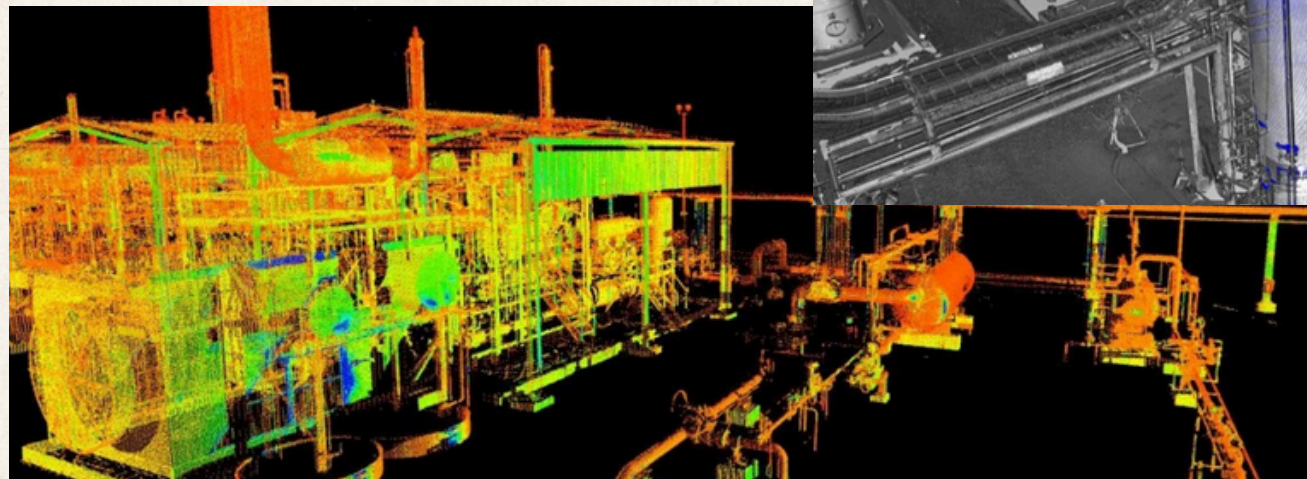
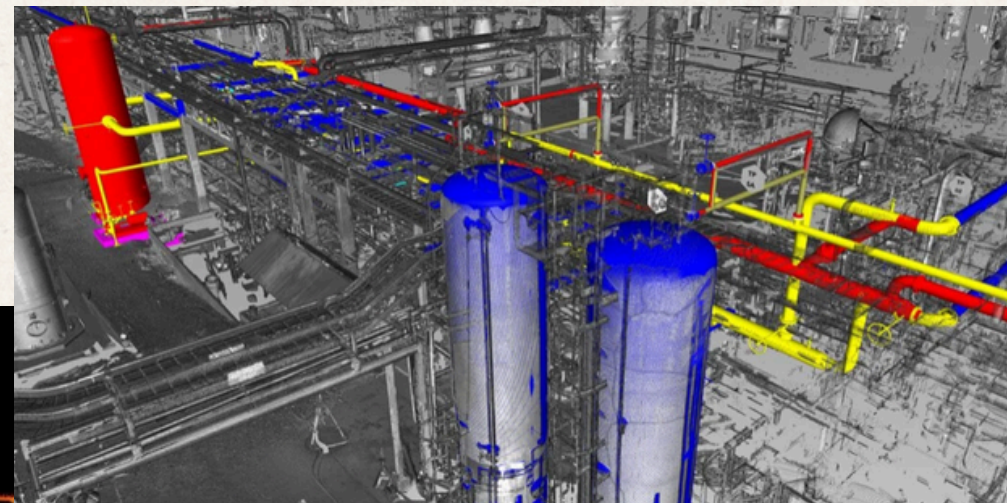
# LiDAR

04/07

**USING LASER PULSES, WE CAN CREATE HIGHLY ACCURATE 3D MODELS OF TERRAIN, STRUCTURES AND INFRASTRUCTURE. CAN PENETRATE THROUGH VEGETATION AND CAPTURE PRECISE ELEVATION DATA.**

## 3D MAPPING FROM THE AIR.

- PIPELINE & RIGHT-OF-WAY MAPPING
- PAD & FACILITY DESIGN
- VOLUME CALCULATIONS
- STRUCTURAL DEFORMATION MONITORING



|                 | SPECS   |
|-----------------|---|
| DRONE           | DJI M350<br>FREEFLY ALTA X<br>ARCSKY X55          |
| FLIGHT TIME     | 20+ MINS.   |
| SENSOR          | PHEONIX AERIAL LiDAR<br>DJI L2 SENSOR             |
| SURVEYING RATE  | 300-600 ACRES/DAY<br>*TERRAIN DEPENDENT           |
| DATA TURNAROUND | 1 WEEK - DATA PROCESSING<br>4 WEEKS - FULL REPORT |
| SETUP TIME      | 60 MINS.  |
| CREW            | 2 PERSON CREW ON-SITE                             |

# METHANE / GAS DETECTION

**DRONE-MOUNTED METHANE SENSOR TO DETECT AND QUANTIFY GAS LEAKS IN REAL TIME.**

**DETECT FUGITIVE EMISSIONS**

**KEEPS PERSONNEL OUT OF HAZARDOUS ZONES**

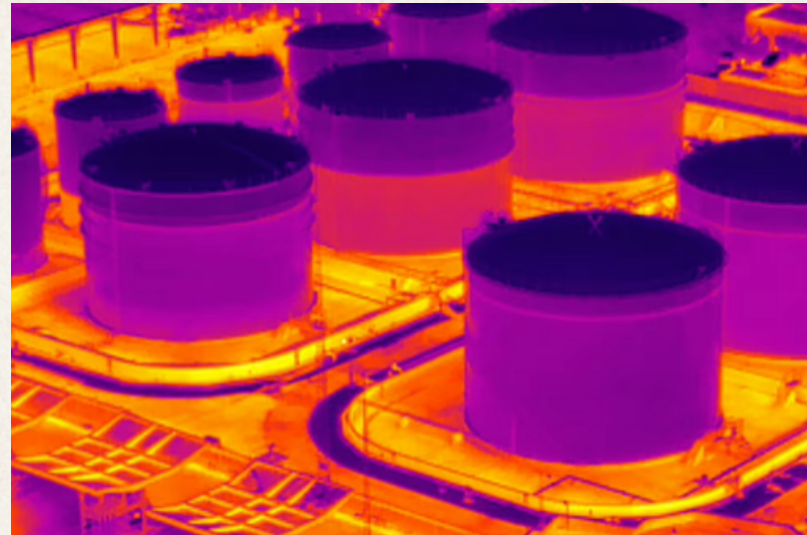


|                 | SPECS   |
|-----------------|---|
| DRONE           | DJI M350<br>FREEFLY ALTAX<br>ARCSKY X55           |
| FLIGHT TIME     | 20+ MINS.   |
| SENSOR          | BLCH4   |
| SURVEYING RATE  | 100-300 ACRES/DAY<br>*TERRAIN DEPENDENT           |
| DATA TURNAROUND | 1 WEEK - DATA PROCESSING<br>4 WEEKS - FULL REPORT |
| SETUP TIME      | 60 MINS.  |
| CREW            | 2-3 PERSON CREW ON-SITE                           |

# THERMAL IMAGING

IMAGING THAT DETECTS TEMPERATURE DIFFERENCES INVISIBLE TO THE HUMAN EYE

- IDENTIFY GAS OR FLUID LEAKS
- DETECT INSULATION FAILURES
- DETECT OVERHEATING TRANSFORMERS
- DETECT FAILING BREAKERS



## PREDICTIVE MAINTAINCE VS REACTIVE MAINTANCE

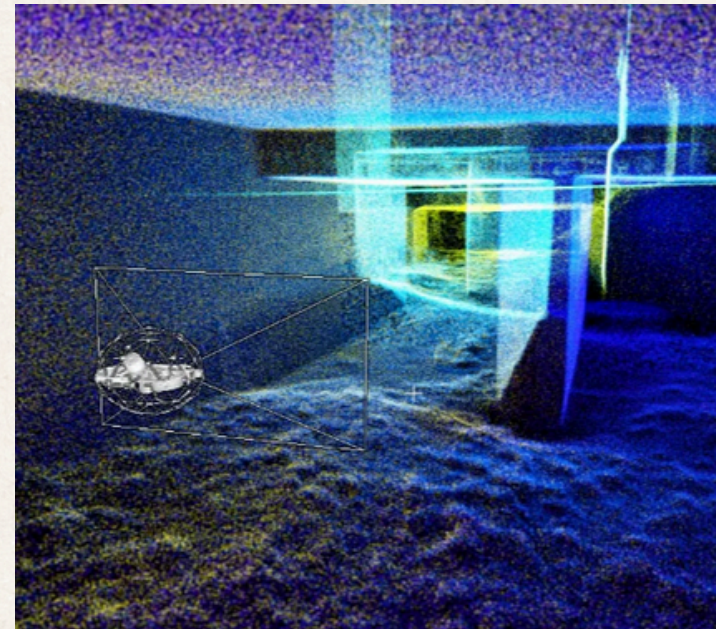


|                 | SPECS   |
|-----------------|---|
| DRONE           | DJI MAVIC 3 THERMAL                               |
| FLIGHT TIME     | 30+ MINS.   |
| SENSOR          | ONBOARD CAMERA                                    |
| SURVEYING RATE  | 100-300 ACRES/DAY<br>*TERRAIN DEPENDENT           |
| DATA TURNAROUND | 1 WEEK - DATA PROCESSING<br>4 WEEKS - FULL REPORT |
| SETUP TIME      | 30 MINS.  |
| CREW            | 2 PERSON CREW ON-SITE                             |

# CONFINED SPACE EXPLORATION

DEPLOYING SPECIALIZED DRONES INTO TANKS, VESSELS, FLARE STACKS, PIPELINE. CONDUCTING VISUAL INSPECTIONS WITHOUT SENDING PERSONNEL INSIDE.

- ELIMINATE HUMAN ENTRY
- REDUCES RESCUE RISK
- FASTER INSPECTION
- REDUCES LABOR REQUIRMENTS



|                 | SPECS   |
|-----------------|---|
| DRONE           | FLYABILITY ELIOS 3  |
| FLIGHT TIME     | 10 MINS.  |
| SENSOR          | VISUAL INSPECTION CAMERA/THERMAL<br>LiDAR<br>FLAMMABLE GAS SENSOR<br>RADIATION SENSOR |
| SURVEYING RATE  | 400 METERS/DAY<br>*TERRAIN DEPENDENT  |
| DATA TURNAROUND | 1 WEEK - DATA PROCESSING<br>4 WEEKS - FULL REPORT                                     |
| SETUP TIME      | 60 MINS.  |
| CREW            | 2 PERSON CREW ON-SITE   |